

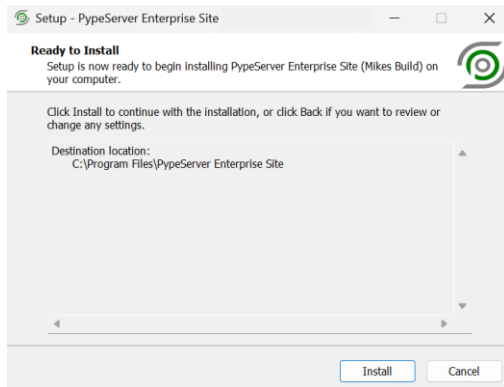
Installing Enterprise

Install a License Seat

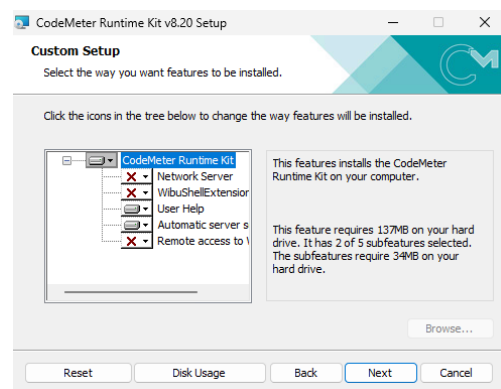
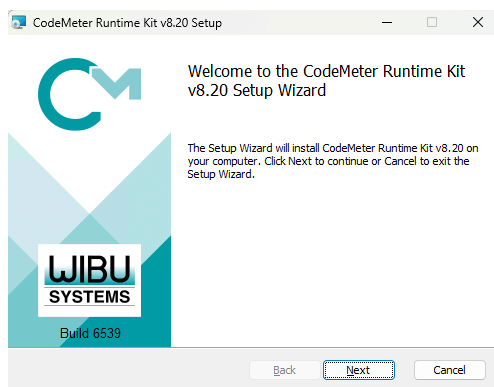
At least one Enterprise seat must host a CodeMeter License Server that manages PyeServer licenses. This comes preinstalled on the Kiosk system provided by PyeServer, but it can be hosted on any system.

To install a License Seat:

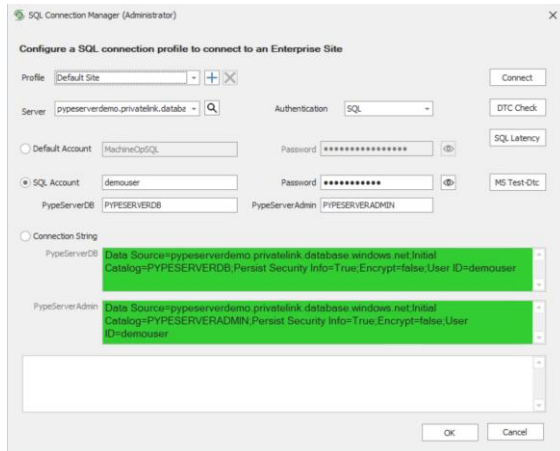
- Navigate to your folder "\\<File Share>\PyeServer Staging\Updates\Configuration\PyeServer" and locate your current install package. Alternatively, unzip the package provided to you by PyeServer Support to a temporary folder.
- Start the Site installer named PyeServerAdminPreinstallSetup.exe. In the startup dialog click the Install button to unpack and start the Enterprise Site Update tool.



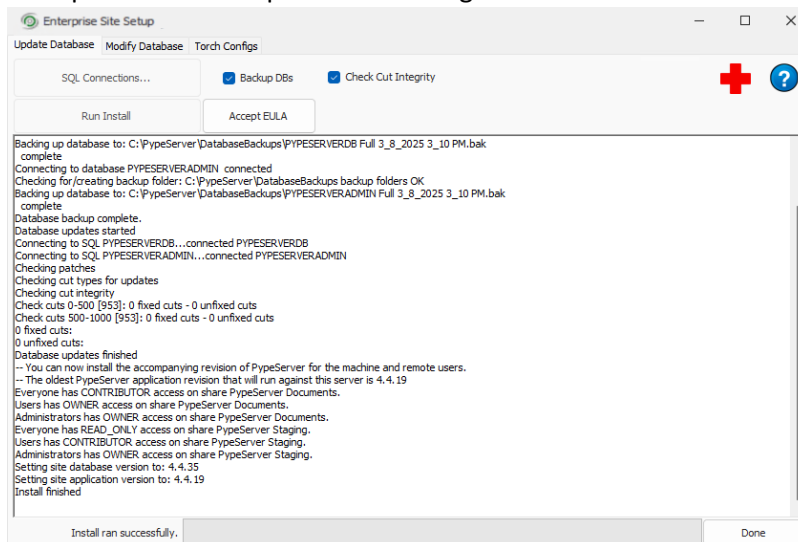
- A CodeMeter License Server is required and if not found it will be installed if the computer has a local SQL server. If it does not, then CodeMeter must be installed manually. The installer can be found in the package folder under the "PyeServer Staging" file share folder. Run the installer and accept all default settings.



- Once the Site Update appears, click the "SQL Connection" button to configure the SQL connection and connect to the SQL databases.



- Click the "Run Install" button to update the Enterprise databases with the latest patches and register the installer packages with the Site Update System. The Update System ensures all Enterprise Seats are updated to the registered Site version.



Configure Seat default settings

A defaultsettings.ini file is created by the Site Update tool and configured with basic SQL connection settings configured and used by the Site Update tool during installation.

This file is optional and when found during an Enterprise Seat install the connection will automatically be added to the local PipeServer registry values. If the file does not exist, then Enterprise will prompt the user to enter and save the SQL connection credentials during the first start.

More Information

- [Configure Seat Default Settings](#)

Install Seats

New Seats can be installed once the Site Update tool has registered the package with the Site Update System and the defaultsettings.ini file created.

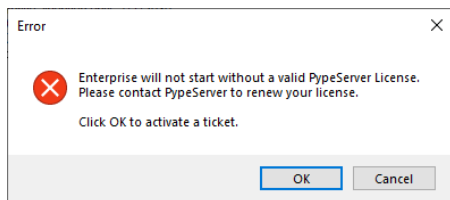
New seats can be installed by navigating to the " Staging Folder" on the Azure File Share, locate the current site version package and starting the installer PypeServerAppSetup.exe.

Alternatively, the installer can be started from a UNC folder path, for example: \\<File Share Path>\PypeServer Staging\Updates\Configuration\PypeServer\4.5.22\PypeServerAppSetup.exe

The installation can run unattended by adding the command line switch /SILENT. For no visible UI activity use the switch /VERYSILENT.

License Activation

When an Enterprise Seat starts it will check for an active license. If it finds the Site has no license or it has expired, it will display this dialog.



Clicking the OK button will open a browser window to the PypeServer License Portal. Clicking the Cancel button will close Enterprise.

To activate a new license on the License Portal requires a license ticket received from PypeServer. Please contact PypeServer regarding licensing and renewals.

More Information

- [License Activation Steps](#)

Updating Enterprise

Automatic Updates

The Enterprise Update System automatically checks the internet for PypeServer published updates. If one is found it will be downloaded to the "PypeServer Staging" share where it will be made available to all License Seats.

Updates are available when a download arrow appears in the upper right corner Enterprise. Clicking on the arrow opens the Update dialog which displays the available version, clicking on the Install button will update the Enterprise Site.

Once a License Seat has run the update the new version will be advertised to all other Seats connected to the Enterprise Site.

Manual Updates

Manually updating a site may be desired if the IT team wants to schedule and manage the site Update themselves and have their Configuration Management infrastructure manage the Enterprise Seat updates.

To update a Site manually, follow the earlier instructions to run the Site Setup. After the Site has been updated, click on the "Accept EULA" button to accept the EULA. Accepting the EULA after an update is mandatory. Not accepting the EULA in Site Setup will cause the Accept EULA window to appear on one or more Enterprise Seats until the EULA is accepted.

The Enterprise Site enforces the required Site version for all Seats. Once the Site has been updated all Enterprise Seats will be notified that they must upgrade to the Site version. The notification occurs when starting Enterprise, and every minute while running.

Alternatively, after the Site Setup has been run and the EULA accepted, schedule IT Configuration infrastructure immediately deploy the PypeServerAppSetup.exe to all Enterprise Seats using the /VERYSILENT command line option.